

# Lassen County



## 2017 Crop & Livestock Report





# COUNTY OF LASSEN

## DEPARTMENT OF AGRICULTURE/WEIGHTS & MEASURES



**Craig A. Hemphill**  
Agriculture Commissioner/Sealer  
175 Russell Avenue  
Susanville, CA 96130-4215

**Phone:** (530) 251-8110 • **Fax:** (530) 251-2726  
**Email:** agcommissioner@co.lassen.ca.us

August 31, 2018

**Karen Ross, Secretary** – California Department of Food and Agriculture

### **The Honorable Board of Supervisors, County of Lassen**

Supervisor, Aaron Albaugh, Chairman, District 4

Supervisor, Chris Gallagher, District 1

Supervisor, David Teeter, District 2

Supervisor, Jeff Hemphill, District 3

Supervisor, Tom Hammond, District 5

I am pleased to present the 2017 Lassen County Crop and Livestock report in accordance with the requirements of Sections 2272 & 2279 of the California Food and Agriculture Code. The report summarizes the estimated acreage, yield, gross value and sustainable agriculture of Lassen County's agricultural production for the 2017 calendar year.

The values presented in this report represent the gross value for products and do not reflect the cost of production, marketing, storage or transportation. It does not attempt to show county inventory, cost of production or net return to growers.

The total gross value of Lassen County Agriculture production in 2017 was \$129,690,481. The highest total on record. This increase can be attributed to higher hay and cattle prices although 2017 also saw a 20% increase in wild rice acreage. While 4 of the 5 commodity groupings increased in value "Seed, Fruit, Vegetable and Nursery Crops" decreased by 10% undoubtedly due to a drop in garlic seed acreage and lower wild rice prices.

I would like to thank the producers and public agencies that cooperated by supplying all of the data and photos that were used in preparing this report, and to my staff for all the effort that was put forth in compiling the final document.

Respectfully Submitted,

**Craig A. Hemphill**  
Agriculture Commissioner/Sealer of Weights & Measure  
agcommissioner@co.lassen.ca.us





# OUR MISSION

The Agriculture Commissioner promotes Lassen County agriculture production by protecting it from injurious pests & diseases, to ensure the safety and wholesomeness of food and other products for the consumer, and to build consumer and business confidence in the market place through the maintenance of equity.

## PERSONNEL & ASSOCIATES

Craig A. Hemphill, *Agriculture Commissioner/Sealer of Weights & Measures*

Tina Hilburn, *Supervising Inspector* ★ Cheryl Lauritsen, *Supervising Inspector*

Adriana Scala, *Biologist I*

Mike Stewart, *Seasonal* ★ Robin Skelton-Snipes, *Seasonal*

Kevin Ostmeyer, *Seasonal* ★ David Gordon, *Seasonal*

Rhett Rhodes, *Seasonal* ★ George Affonso, *USDA Wildlife Specialist*

Special thanks to all of the farmers and ranchers who provided the valuable information and photos used to compile this report.

[agcommissioner@co.lassen.ca.us](mailto:agcommissioner@co.lassen.ca.us)



# Lassen County's Million Dollar Crops

<b>CROP</b>	<b>2017 Crop Value</b>	<b>2017 Crop Ranking</b>	<b>2016 Crop Ranking</b>
Beef Cattle	\$30,144,836	1	1
Other Hay*	\$29,359,957	2	2
Alfalfa Hay	\$20,634,328	3	4
Seed, Fruit, Vegetable & Nursery Crops	\$20,463,904	4	3
Timber	\$12,701,228	5	5
Irrigated Pasture	\$4,830,000	6	6
Grain Hay	\$4,175,224	7	7
Wild Rice	\$2,812,514	8	9
Sheep & Lambs	\$1,944,000	9	8
Wheat	\$1,118,021	10	—



## Five Year Summary Of Production Values

<b>YEAR</b>	<b>Field Crops</b>	<b>Seed, Fruit Vegetable &amp; Nursery</b>	<b>Livestock &amp; Poultry</b>	<b>Livestock Products</b>	<b>Timber Harvest</b>	<b>TOTAL</b>
2017	\$61,430,999	\$23,276,418	\$32,152,836	\$129,000	\$12,701,228	\$129,690,481
2016	54,273,808	25,982,234	29,253,438	129,000	11,083,367	120,721,847
2015*	60,707,113	17,293,893	38,900,335	129,000	9,735,464	126,790,805
2014	62,754,412	18,475,580	44,343,120	129,000	6,309,432	132,011,544
2013**	66,773,524	18,421,542	27,347,842	129,000	11,349,943	124,021,851

\*2015 Timber Harvest and Total adjusted to include Christmas tree values

\*\*2013 figures corrected for accuracy



# Summary Of Production Values

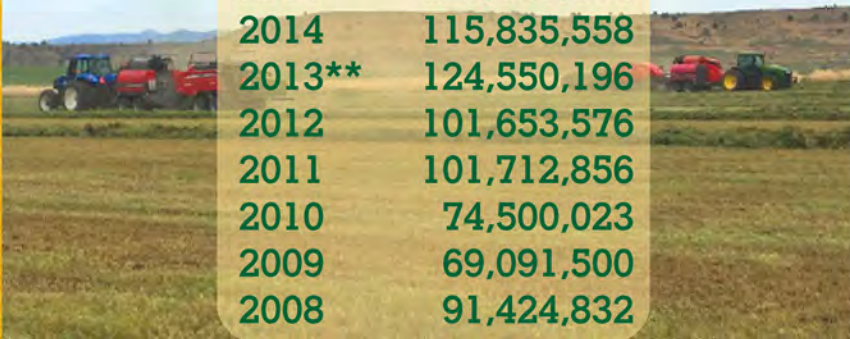
## COMMODITY GROUP

	Gross Value		Changes In Gross Value
	2016	2017	
Field Crops	\$54,273,848	\$61,431,539	11.65%
Seed, Fruit, Vegetable & Nursery	25,982,234	23,276,418	-10.41%
Livestock & Poultry	29,253,438	32,152,836	9.02%
Livestock & Poultry Products	129,000	129,000	0
Timber Harvest	11,083,367	12,701,228	12.74%





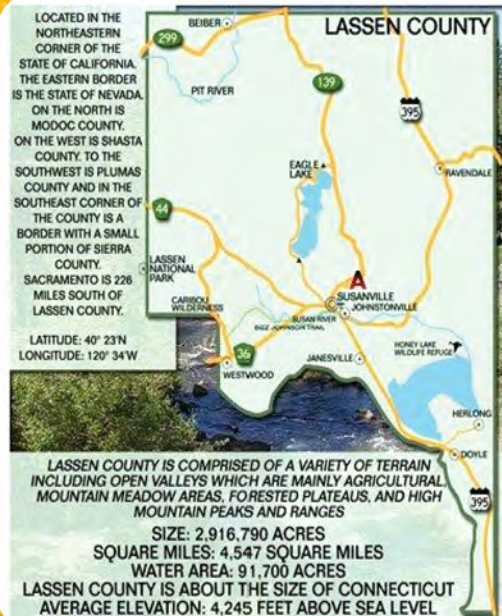
## 10 Year Comparison



2017	\$129,690,481
2016	120,721,887
2015*	126,790,805
2014	115,835,558
2013**	124,550,196
2012	101,653,576
2011	101,712,856
2010	74,500,023
2009	69,091,500
2008	91,424,832

\*2015 FIGURES CORRECTED TO INCLUDE CHRISTMAS TREE VALUES

\*\*2013 FIGURES CORRECTED FOR ACCURACY



Lassen County was founded in 1864 after the "Sagebrush War".  
It covers 4,720 square miles of which only 179 square miles (3.8%) is water.



## Top Lassen County Crops

RANK 2017	Commodity	2017 Gross Value	Rank 2016
1	All Hay	\$54,169,426	1
2	Livestock	32,152,836	2
3	Misc. Nursery Crops	20,463,904	3
4	Timber	12,701,228	4
5	Pastureland	5,893,989	5
6	Wild Rice	2,812,514	6
7	Wheat	1,118,021	7
8	Livestock Products	129,000	8



## Field Crops

Crop	Year	Acres Harvested	Production Per Acre	Unit	Production Total	Value Per Unit	Total Value
Hay, Alfalfa	2017	27,586	4.00	Ton	\$110,344	\$187.00	\$20,634,328
	2016	26,378	4.32	Ton	113,953	166.42	18,964,058
Hay, Grain	2017	9,213	3.30	Ton	30,403	137.33	41,752,244
	2016	9,775	3.23	Ton	31,573	100.43	3,170,876
*Hay, Other	2017	29,250	4.87	Ton	142,448	206.11	29,359,957
	2016	29,797	4.53	Ton	134,980	178.00	24,026,440
Wheat	2017	2,600	2.40	Ton	6,240	179.17	1,118,021
	2016	2,600	1.50	Ton	3,900	285.00	1,111,500
Pasture (Irrigated)	2017	23,000	6.00	Aum	138,000	35.00	4,830,000
	2016	23,000	6.00	Aum	138,000	40.00	5,520,000
Pasture (Non-Irrigated)	2017	22,000	1.00	Aum	22,000	20.00	440,000
	2016	22,000	1.00	Aum	22,000	22.66	498,520
Pasture (Range)	2017	1,291,253	.10	Aum	129,125	1.27	163,989
	2016	1,291,253	.10	Aum	129,125	2.11	272,454
Aftermath (Stubble-all)	2017	20,000	1.00	Aum	20,000	23.00	460,000
	2016	20,000	1.00	Aum	20,000	23.00	460,000
**Misc.	2017						250,000
	2016						250,000
<b>TOTAL</b>		<b>2017</b>					<b>\$61,431,539</b>
		<b>2016</b>					<b>54,273,848</b>

\*Grass Alfalfa Mix, Fescue, Timothy Hay, Orchard Grass Hay & Meadow Grass Hay

\*\*Includes Straw, Barley, Oats & Corn for Fodder. No Figures Available for 2015

## CROPS

\*Misc. Crops (Alfalfa, Seed, Apples, Belgian, Endive, Garlic Seed, Blueberries, Mint, Pumpkins, See Peas, Watermelon, Strawberries, Peaches, Misc. Vegetables & Ornamental Flowers)

## Seed, Fruit, Vegetable & Nursery Crops

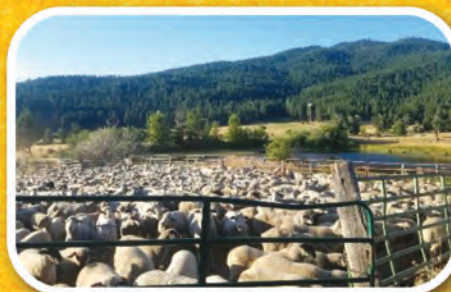
Crop	Year	Harvested Acreage	Production Per Acre	Unit	Production Total	Value Per Unit	Total Value
Wild Rice	2017	2,173	1,505	Lbs.	\$3,270,365	.86/Green Lb.	\$2,812,514
	2016	1,760	1,705	Lbs.	3,000,800	.93/Green Lb.	2,790,744
* Misc Crops	2017						20,463,904
	2016						23,191,490

**TOTAL 2017 \$23,276,418**  
**2016 25,982,231**



# Livestock & Poultry

Commodity	Year	# Of Head	Liveweight	*Unit	Per Unit	Total
Cows	2017	6,925	81,369	Cwt.	\$79.00	\$6,428,151
	2016	6,659	66,590	Cwt.	74.59	4,966,948
Calves	2017	6,297	31,485	Cwt.	144.92	4,562,806
	2016	6,055	30,275	Cwt.	131.76	3,989,034
Heifers	2017	7,204	54,030	Cwt.	139.25	7,523,677
	2016	6,927	51,953	Cwt.	136.63	7,098,338
Steers	2017	9,796	71,021	Cwt.	139.25	9,889,674
	2016	9,419	70,643	Cwt.	136.63	9,651,953
Bulls	2017	1,224	22,032	Cwt.	79.00	1,740,528
	2016	1,177	20,598	Cwt.	74.59	1,536,405
Sheep/Lambs	2017	10,000	12,000	Cwt.	162.00	1,944,000
	2016	10,000	12,000	Cwt.	162.23	1,946,760
Misc. Livestock (Pheasant, Hogs Goats, Chicken Alpacas)	2017					64,000
	2016					64,000
<b>TOTAL</b>	<b>2017</b>					<b>\$32,152,836</b>
	<b>2016</b>					<b>29,253,438</b>



\*Cwt. = Per 100lbs.



## Livestock Products

Commodity	Year	Total
Includes: Wool, Eggs, Chicks, Apiary & Rabbits	2017	\$129,000
	2016	129,000
<b>TOTAL</b>	<b>2017</b>	<b>\$129,000</b>
	<b>2016</b>	<b>129,000</b>



Lassen and Modoc Counties are the only two California Counties that are completely designated "Open Range". If you want the cattle to stay off your property, you must fence them out.



# Timber Harvest

Commodity	Year	Production	Unite	Value	Total
Saw Timber*	2017	\$67,128	Net MBF	\$188.67	\$12,665,478
	2016	67,519	Net MBF	163.86	11,063,779
Christmas Trees*	2017	25,536	Linear Ft.	1.40	35,750
	2016	13,992	Linear Ft.	1.40	19,588
<b>Total**</b>	<b>2017</b>				<b>\$12,701,228</b>
	<b>2016</b>				<b>11,083,367</b>



\*Figures provided by the Timber Tax Division, California State Board of Equalization

\*\*Figures adjusted for inclusion of Christmas tree information

## Pest Exclusion

**Exotic Pests And/Or  
Target Pests**

**Incoming Plant Material  
Via UPS, Air, Truck or Mail**

**100 Shipments  
Inspected**

## Pest Detection

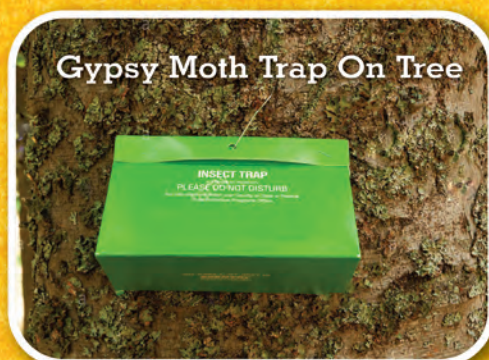
**Gypsy Moth  
Japanese Beetle**



**106 Traps In Lassen County  
2 Traps In Lassen County**

**None Detected  
None Detected**

Gypsy Moth Trap On Tree



CDFA entomologist, Charlie Pickett, sweeping for Cereal Leaf Beetle and its biocontrol wasp.

No Gypsy Moths, but plenty of other insects.



Lassen County has a short insect trapping season. Currently, the only pests of concern are Gypsy moth and Japanese beetle. However, CDFA has been doing some Cereal Leaf Beetle surveys in Lassen County in order track the beetle and a biological control parasitic wasp as they move south out of Oregon.





# Lassen County Sustainable Agriculture

## 2017 ORGANIC FARMING STATISTICS

Alfalfa Hay	1,897	Acres Certified
Other Hay	266	Acres Certified
Meadow Grass Hay	600	Acres Certified
Rye Seed	156	Acres Certified
Endive	62	Acres Certified
Quinoa	300	Acres Certified
Peas (Dried)	325	Acres Certified
Wheat	220	Acres Certified
Pasture & Rangeland	80,204	Acres Certified
Wild Rice	396	Acres Certified
Covercrop	51	Acres Certified
Cattle	1,134	Certified Organic (#of Head)

**Total Organic Acres:** 84,478

**Total Number of Organic Farms & Ranches:** 13

**Total #of Cattle:** 1,134

**Total Value:** \$3,341,907



1: Harvesting organic dried peas; 2. Loading organic dried peas for shipping; 3. Organic cattle grazing on organic pasture/rangeland; 4. Grouse abundant on organic rangeland; 5. Deer sharing organic grazing ground



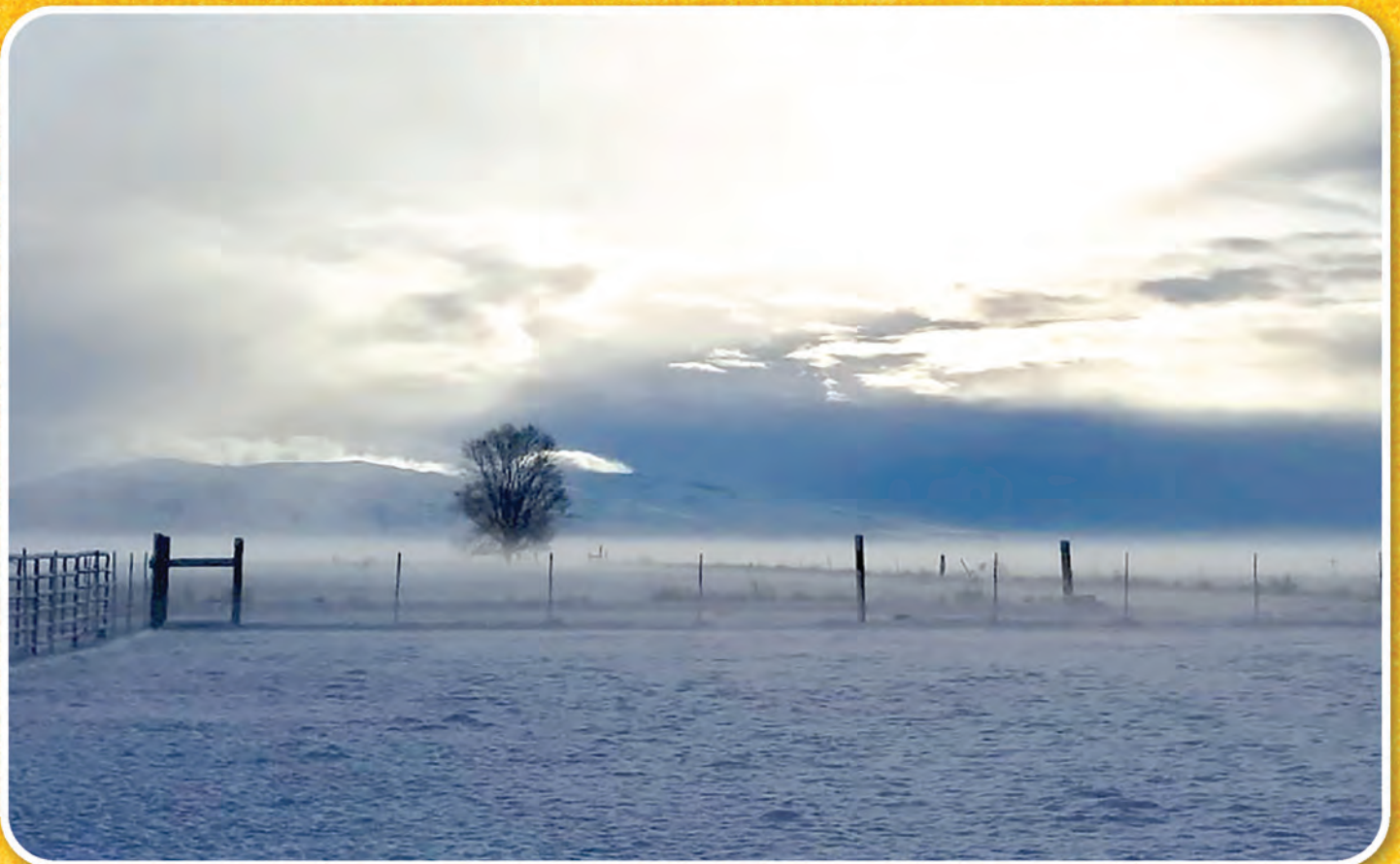
<b>PEST ERADICATED</b>	<b>CONTROL METHOD</b>	<b>2017 NET ACRES</b>	<b>2016 NET ACRES</b>
Scotch Thistle	Chemical/Mechanical	236.06	176.9
Dalmatian Toadflax	Chemical/Mechanical/Biological	4.05	12.91
Spotted Knapweed	Chemical/Mechanical	13.465	8.94
Diffuse Knapweed	Chemical	0	0
Squarrose Knapweed	Chemical	5.25	3.58
Leafy Spurge	Chemical	.18	.13
Rush Skeletonweed	Chemical	3.52	.13
Musk Thistle	Chemical	.36	.23
Russian Knapweed	Chemical/Biological	12.361	13.63
Yellow Starthistle	Chemical/Mechanical	56.24	37.7
Tall whitetop	Chemical	7.673	5.29
Mediterranean Sage	Chemical	4.66	12.78
Hoary Cress	Chemical	.025	0
Puncturevine	Chemical	15.98	18.23
Canada Thistle	Chemical	2.445	6.97
Wavyleaf Thistle	Chemical	0	*
Dyer's Woad	Chemical	5.54	12.05
Sulfur Cinquefoil	Chemical	0	.08
Yellowspine Wavyleaf			
Thistle Hybrid	Chemical	.41	.15
Bull Thistle	Chemical	5.495	2.84
Klamath Weed	Chemical	0	.6
Vegetation Management	Chemical	.95	0
Hemlock	Chemical	.438	0



Left to right: Scotch thistle; Scotch after being sprayed with herbicide containing blue dye; Seasonal sprayer applying herbicide in a field infested with knapweed; Biologist applying herbicide to Dalmation toadflax; Myrtle spurge plant; Myrtle spurge flower.

Lassen County continues to fight against California A-rated noxious weeds. Scotch thistle continues to be a major problem. Yellowstar thistle, though not an A-rated weed, is becoming more wide spread therefore efforts to curb its spread have increased. Myrtle spurge, is a new problem that showed up in a landscaped area near Eagle Lake. Efforts are ongoing to prevent its spread.





**Lassen County Agricultural Commissioner**

530-251-8110

175 Russell Avenue ★ Susanville, CA 96130