

NOVEMBER 5, 2019



CALIFORNIA REPUBLIC

LASSEN COUNTY

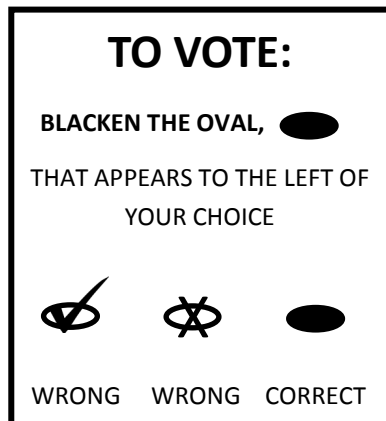
Compiled and Distributed by Lassen County Clerk-Recorder

ASSEMBLY DISTRICT 1
SPECIAL GENERAL ELECTION
SAMPLE BALLOT & VOTER
INFORMATION GUIDE

NOTICE: Application for a Vote by Mail Ballot is on the back cover.
Your polling place may have changed,
**CHECK THE LOCATION OF YOUR POLLING PLACE ON THE
BACK LABEL OF THIS BOOKLET.**







ELECTION DAY HOURS WILL BE 7 AM—8 PM

Using Lassen County's Voting System



E
X
A
M
P
L
E
S



-  THOMAS A. EDISON
-  ALBERT EINSTEIN
-  HELEN KELLER
-  FLORENCE NIGHTINGALE
-  BOOKER T. WASHINGTON
-  (WRITE IN WOULD GO HERE)

TO VOTE:

- Use black ink to mark the ballot
 - Blacken the oval (●) completely
 - Remember to check both sides of the ballot
 - Do not vote for more than the number of candidates to be elected for each office
 - If you make a mistake in marking your ballot, cross out the incorrect mark and write "ok" next to your correct choice.
- DO NOT sign or initial your ballot.** (The envelope is the only item you need to sign).

You may request a new ballot by coming to the County Clerk's Office at:

The Historic Courthouse, 220 S. Lassen Street, Suite 5

Susanville, CA 96130

IMPORTANT REMINDERS:

- ◇ **DO NOT** deface, tear or cut the ballot
- ◇ Remove your ballot stub before placing in envelope
- ◇ Place ballot in return envelope
- ◇ Return ballot to any Election Official
- ◇ **IF MAILING BALLOT**, postmark by Election Day **OR** return to any polling location on Election Day
- ◇ **SIGN YOUR ENVELOPE; YOUR VOTE IS NOT VALID WITHOUT IT**



Campaigns & Elections

VOTER INFORMATION

How do I contact a candidate?

Local candidate contact information is posted on the Lassen County Registrar of Voter's page on the County Clerk-Recorder's website at: www.lassencounty.org.

Where do I find a candidate's campaign finance reports?

Campaign financial disclosure statements filed by local candidates, are available in the County Clerk's office at The Historic Courthouse, 220 S. Lassen Street, Suite 5, Susanville, CA 96130. Cal-Access also provides financial information supplied by state candidates, donors, lobbyists, and others. Information is available at www.sos.ca.gov.

In accordance with Section 13302(b) of the California Elections Code

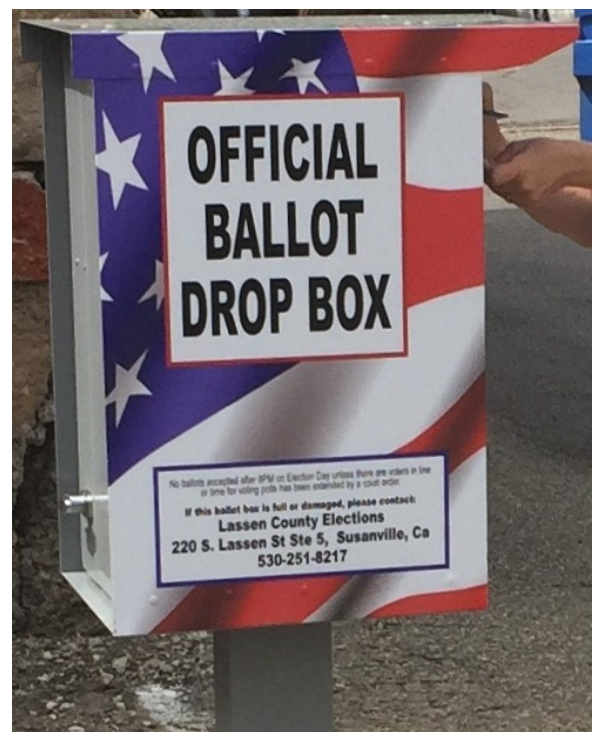
**No Party Endorsements were received for the
November 5, 2019, Assembly District 1 Special General Election**

THE ELECTIONS OFFICE NOW HAS A DROP BOX

Lassen County has installed an
OFFICIAL BALLOT DROP BOX

for the public's convenience. It is adjacent
to the old jail, located in the driveway
behind The Historic Courthouse
220 South Lassen Street, in Uptown
Susanville.

YOUR VOTE WILL COUNT!



CANDIDATE'S STATEMENT OF QUALIFICATIONS



Each Candidate's statement in this pamphlet is volunteered and paid for by the candidate. This pamphlet may not contain a complete list of candidates. A complete list of candidates are listed on the Sample Ballot.

Each statement of qualifications is printed EXACTLY as submitted by the candidate. Statements have not been checked for accuracy by any public agency.

You may also access this information on the Election page of the County Clerk-Recorder's website at:

<http://www.lassencounty.org>



POLLING PLACES OPEN 7AM and CLOSE AT 8 PM

CHECK THE BACK OF THIS VOTER INFORMATION GUIDE FOR
YOUR POLLING LOCATION; IT MAY HAVE CHANGED.

**Mail, drive up, or bring your ballot to the County Clerk's Office
on or before election day at:**

The Historic Courthouse

220 S. Lassen Street, Suite 5, Susanville, CA 96130

**Drive-up drop box available in the driveway behind
The Historic Courthouse**

Follow your ballot on our website at www.lassencounty.org.

Choose "Ballot Status Lookup" on the Elections page. You will need the last four digits of your driver's license number and birthdate to use this service.

**STATEMENT OF CANDIDATE FOR:
ASSEMBLY DISTRICT 1
SPECIAL GENERAL ELECTION**

MEGAN DAHLE

Age: 43

Farmer/Businesswoman/Mother

The California Professional Firefighters, California Highway Patrolmen's Association and California Farm Bureau Federation support my campaign to improve lives in Lassen County.

I'm a Lassen County farmer, small business owner and mother who has seen how Sacramento has often forgotten the needs of rural California and believe we deserve better.

Repealing laws that released dangerous criminals and drug dealers while ending sanctuary city policies which protect illegal immigrant criminals will make families safer.

Reducing the cost of health care, making prescription drugs more affordable, keeping taxes down and protecting Prop 13 will help more Lassen County families make ends meet.

As School board President, I ensured students received great educations, made schools safer, balanced every budget and maintained a substantial reserve. In the Assembly, I'll work to ensure students learn the skills needed to succeed in tomorrow's economy and that parents can choose the best educational opportunities for their child.

Improving forestry management, clearing excess fuel and ensuring power lines are properly maintained will prevent more catastrophic wildfires. Helping wildfire victims recover from is the right thing to do for our neighbors.

Send me to Sacramento and I'll fight to prevent wildfires, cut government waste, reduce health care costs, support Lassen County's AG economy, protect the 2nd amendment, keep taxes down and give our children the futures they deserve.

We are strong together.

If you have questions, please call me at (530) 251-6757 or visit www.votemegandahle.com.

I'd be honored to have your vote.

**STATEMENT OF CANDIDATE FOR:
ASSEMBLY DISTRICT 1
SPECIAL GENERAL ELECTION**

ELIZABETH BETANCOURT

Age: 39

Farmer/Watershed Scientist

I am a small business owner, farmer, and advocate for rural values and communities. I believe in transparency in governance, straightforward conversation, and integrity in all actions. I welcome and respect your views and will not change who I am from one group to the next: you'll always know where I stand. Leadership should be the result of hard work and dedication, the same rural values that guide me in daily life.

In the last year, our North State has faced extreme tests of our faith. We've come together in amazing ways to rebuild from catastrophic wildfire, but many concerns remain. We have future challenges to address. With so much to be done, I respectfully ask for your vote and the honor of representing you in California's First Assembly District.

I have nearly 20 years of experience in forest and watershed stewardship, water resources planning, and local farming. Working together takes courage: I have worked with individuals representing the north state's diverse industries and interests, governments, and sovereign nations, to achieve common goals. Fighting for our water supply and stewarding forest resources is something I've made progress on throughout our North State, and I am asking for your support to continue these efforts.

I look forward to working with you to learn about your challenges and vision. With your support we can make a difference for our future. As our next Assembly member, I will be a new voice for the North State.

www.BetancourtForAssembly.com

SAMPLE BALLOT ONLY

SAMPLE BALLOT

NOTICE TO THE PHYSICALLY DISABLED VOTER:

If the polling place is not accessible to the physically disabled voter, such voter is entitled to vote in one of the following ways: A precinct board member may take a regular ballot to the physically disabled person at a place as near as possible to the polling place and which is accessible to such person, qualify that person to vote, and return the voted ballot to the polling place; or if it is impractical to vote a regular ballot outside the polling place, please use attached application and apply for a Vote-By-Mail ballot.

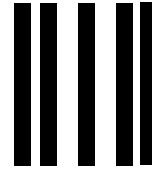
Any voter may apply to permanently Vote-By-Mail in accordance with California Elections Code Sections 3001 & 3201. An application is located on the back of this booklet.



Detach this stub before mailing Vote-By-Mail Application



FROM:



PLACE
FIRST CLASS
POSTAGE
HERE

DID YOU **SIGN YOUR APPLICATION** AND PRINT YOUR
RESIDENCE ADDRESS ABOVE YOUR SIGNATURE?



JULIE BUSTAMANTE
LASSEN COUNTY CLERK-RECORDER
220 S. LASSEN STREET, SUITE 5
SUSANVILLE, CA 96130-4324

Detach Here



Detach Here

VOTE BY MAIL VOTING INFORMATION

OCT 7 2019	First day to request a Vote By Mail Ballot for this election	PERMANENT VOTE BY MAIL STATUS: Any voter may apply for Permanent Vote By Mail ballot status per Elections code Section 3201, by completing the written request form and checking the box on the back of this Voter Information Guide. If you are requesting a ballot by mail for this election only, complete the form but do not check the box.
OCT 21 2019	Last day to register or update address this election	If you have moved within Lassen County before election day; you may still vote this election. Go to the Polling Place near your new address or come to the County Clerk's office. You will use a provisional ballot to vote for this election , and you will need to complete a change of address for future elections.
OCT 29 2019	Last day to request a Vote By Mail Ballot	You must already be a registered voter in this county. Simply make a separate request for each election OR request to be a "Permanent Vote By Mail," voter on the reverse side of this form. Sign your request in your own handwriting. Submit your request to the County Clerk's office no later than 5 PM on the date shown to the left; 7 days prior to Election Day.
NOV 5 2019	Last day Vote By Mail Ballot can be accepted for counting	Vote By Mail ballots must be POSTMARKED no later than Election Day, and received at the Clerk's office, within 3 days after the Election. Or, you may take your ballot to any polling place in Lassen County no later than 8 PM on Election Day. Any voter who is unable to return his/her ballot, may designate his/her spouse, child, parent, grandparent, grandchild, brother, sister or person who resides in the voter's household to return the ballot. Please make sure to sign your envelope.

JULIE BUSTAMANTE
LASSEN COUNTY CLERK-RECORDER
220 S. LASSEN STREET, SUITE 5
SUSANVILLE, CA 96130-4324



NON-PROFIT ORG.
U.S. POSTAGE
PAID
PCF

BALLOT
TYPE

POLLING PLACE OR VOTE BY MAIL VOTER



APPLICATION FOR VOTE BY MAIL BALLOT: I hereby apply for a vote by mail ballot for the **NOVEMBER 5, 2019, ASSEMBLY DISTRICT 1, SPECIAL GENERAL ELECTION.** I certify under penalty of perjury under the laws of the State of California that the information on this application is true and correct.

X _____

Please *Sign* here-must have original signature from voter

Date

PLEASE MAIL
MY BALLOT TO:

Print Name: _____

Physical address: _____

Mailing address: _____

**PERMANENT VOTE BY MAIL
APPLICATION**

CHECK THIS BOX IF YOU WISH TO

VOTE BY MAIL

PERMANENTLY



Last day to request ballot by mail: **OCTOBER 29, 2019**



Detach Here

Detach Here



NOTICE REGARDING APPLYING FOR A VOTE BY MAIL BALLOT

If you find that for any reason you will be unable to vote in person on election day, promptly complete and sign the application for a **Vote By Mail** ballot printed above and return to:

Julie Bustamante, Lassen County Clerk-Recorder, 220 S. Lassen Street, Suite 5, Susanville, CA 96130-4324

Your application must reach the office of the County Clerk **by October 29th**, (7 days before the election). For further information call (530)251-8217.

PERMANENT VOTE BY MAIL VOTER STATUS

State law now allows any voter who so requests to be a Permanent Vote By Mail Voter. If you check the **Permanent Vote By Mail** box on the Application for Vote By Mail ballot, a ballot will automatically be sent to you for future elections. Failure to vote in two statewide elections will cancel your Permanent Vote By Mail status and you will need to reapply.

ASSISTANCE FOR THE VISUALLY, HEARING, OR SPEECH IMPAIRED

CA Secretary of State's office has a TDD (Telecommunications Device for the Deaf) for election information: 1-800-833-8683 (1-800-TDD-VOTE). For the visually impaired, audio tapes of State Ballot Measures are available from the County Clerk's office.

In an effort to update the voter rolls and reduce waste, the County of Lassen intends to implement provisions of elections Code Section 2224 which allows the County elections office to send a notice to voters who have not voted in any election in the past four years **AND** who have not updated their registration during these four years. The notice asks the voters if they still live at the address where they are registered to vote. Voters who have not voted in any election, nor updated their registration during the past four years but return the notice with an affirmative response, will remain on the active list of registered voters. Such voters who **DO NOT** respond affirmatively will be placed on the inactive voter list, and they will no longer receive election materials.